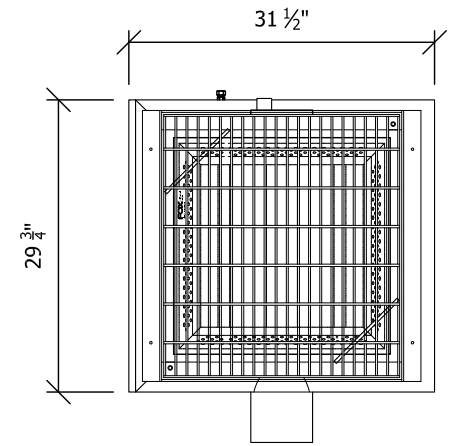
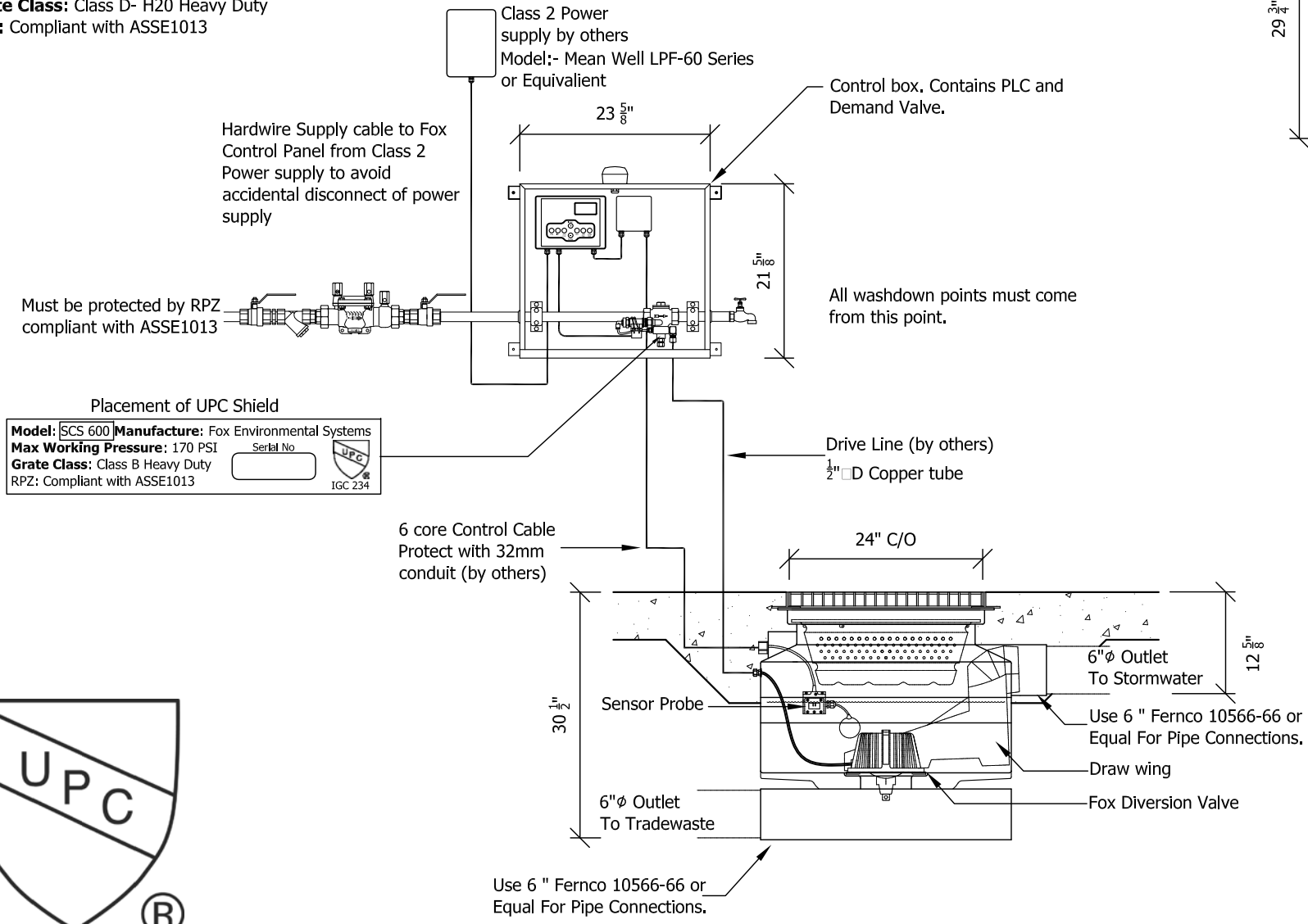


Detail of SCS600 System

Model: SCS600
Manufacture: Fox Environmental Systems
Max Working Pressure: 170 PSI
Grate Class: Class D- H20 Heavy Duty
RPZ: Compliant with ASSE1013



Plan View



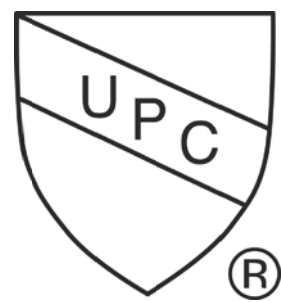
Hardwire Supply cable to Fox Control Panel from Class 2 Power supply to avoid accidental disconnect of power supply

Must be protected by RPZ compliant with ASSE1013

Placement of UPC Shield

Model: SCS 600 **Manufacture:** Fox Environmental Systems
Max Working Pressure: 170 PSI
Grate Class: Class B Heavy Duty
RPZ: Compliant with ASSE1013

Serial No.



IAPMO IGC 234 2016
 File Number 10153



Project	IAPMO
Drawing Title	SCS600 System

Drawn by:	J.F.S
Date:	18/02/2022
Scale:	1:20
Drawing No:	A4-SPEC-1010